

CHC30121 CERTIFICATE III IN EARLY CHILDHOOD EDUCATION AND CARE

RELEASE 1 - 20/07/2021



COURSE INFORMATION

This CHC30121 Certificate III in Early Childhood and Care reflects the role of educators in early childhood education and care who work in regulated children's education and care services in Australia. They support children's wellbeing, and development in the context of an approved learning framework.



This qualification is typically delivered over a duration of 39 weeks, including 160 hours of work placement in a regulated long day care facility.



Upon completion of this qualification, students are eligible to apply for roles in settings such as:

- Long Day Care Centres
- Family Day Care
- Pre-schools and Kindergartens



This qualification is delivered out of our Maddington and Mandurah locations.



"The classes have smaller groups which allows for more one on one time between the trainer and the student. It also allows for everyone to voice their answers, opinions and learn from others".

STEPH
CHC30121 - Certificate III in Early Childhood Education and Care

KEEP IN TOUCH



@NIOT90804



08 9452 2266



@niot_wa



niot.com.au



@National Institute of Training RTO 90804



admin@niot.com.au



CHC30121 CERTIFICATE III IN EARLY CHILDHOOD EDUCATION AND CARE

RELEASE 1 - 20/07/2021

UNITS OF COMPETENCY



The successful completion of this qualification requires competency to be achieved in 17 units comprising of fifteen (15) core units and two (2) elective units.

Unit Code	Unit Name
CHCECE030	Support inclusion and diversity (C)
CHCECE031	Support children's health, safety and wellbeing (C)
CHCECE032	Nurture babies and toddlers (C)
CHCECE033	Develop positive and respectful relationships with children (C)
CHCECE034	Use an approved learning framework to guide practice (C)
CHCECE035	Support the holistic learning and development of children (C)
CHCECE036	Provide experiences to support children's play and learning (C)
CHCECE037	Support children to connect with the natural environment (C)
CHCECE038	Observe children to inform practice (C)
CHCECE054	Encourage understanding of Aboriginal and/or Torres Strait Islander peoples' cultures (C)
CHCECE055	Meet legal and ethical obligations in children's education and care (C)
CHCECE056	Work effectively in children's education and care (C)
CHCPRT001	Identify and respond to children and young people at risk (C)
HLTAID012	Provide First Aid in an education and care setting (C)
HLTWHS001	Participate in workplace health and safety (C)
CHCDIV001	Work with diverse people (E)
HLTFSE001	Follow basic food safety practices (E)

KEY: (C) denotes a core unit and (E) denotes an elective unit.

IMPORTANT INFORMATION

DURATION

This qualification is typically delivered 2 days a week over a duration of 39 weeks, including 160 hours of work placement in a regulated long day care facility.

DELIVERY

The training is conducted by a qualified, industry current, trainer and assessor to ensure the learning is relevant and up to date. This training will take place in a classroom environment using face-to-face training methods at one of our study locations. Intakes are scheduled throughout the year.

ENTRY REQUIREMENTS

There are no formal entry requirements for this qualification, although applicants will need to undertake an LLN assessment. Students must hold a valid Working with Children Check (WWCC) or state equivalent, before participating in practical placement.

FURTHER STUDY OPTIONS

Upon completion, students could go further with their study with our CHC50121 - Diploma of Early Childhood Education and Care.

FEES & FUNDING



Government funding is available for this course. In order to be eligible for funding, students must meet all selection criteria as outlined by the Western Australian Government. For more information, please visit: <https://niot.com.au/funding-fees/>

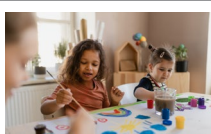
Fee Free: \$0.00

Non-Concession: \$1200.00

To confirm your eligibility, please contact us.

*The Student tuition fees are indicative only and are subject to change given individual circumstances at enrolment. Additional fees may apply such as student service and resource fees.

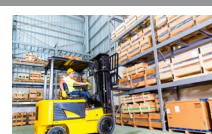
your future starts *here*



EARLY CHILDHOOD
EDUCATION & CARE



AGED CARE



SUPPLY CHAIN
OPERATIONS

KEEP IN TOUCH



@NIOT90804



08 9452 2266



@niot_wa



niot.com.au



@National Institute of
Training RTO 90804



admin@niot.com.au

MADDINGTON

Head Office
Unit 2/15-17 Blackburn St
Maddington WA 6109

MADDINGTON

Training Room
Unit 4/15-17 Blackburn St
Maddington, WA 6190

KENWICK

Practical Warehouse
24 Austin Ave
Kenwick, WA 6107

MANDURAH

Training Rooms
89 Alnutt St
Mandurah, WA 6210