

CHC33015

CERTIFICATE III IN INDIVIDUAL SUPPORT (AGEING)

RELEASE 6 - 28/04/2022
(Superseded)

FREE
IN '23



COURSE INFORMATION

This qualification reflects the role of workers in the community and/or residential setting who follow an individualised plan to provide person-centred support to people who may require support due to ageing, disability or some other reason. Work involves using discretion and judgement in relation to individual support as well as taking responsibility for own outputs.



This qualification is typically delivered over a duration of 6 months, including 120 hours of work placement in an aged care setting.



Upon completion of this qualification, students are eligible to apply for roles such as:

- Personal Carer
- Support Worker
- Respite Worker



This qualification is delivered out of our Maddington and Mandurah locations.



"If you want to change your career or want a fresh start, this is the best place to start. If you have the desire to work, settle yourself in a good and respectful way, this training centre will help you to reach your ultimate goal. They will support you to find the best suitable job for you. The trainers are all professional, and will help you to finish your course on time without any delay".

KIRTTY
CHC33015 - Certificate III in Individual Support (Ageing)

KEEP IN TOUCH



@NIOT90804



08 9452 2266



@niot_wa



niot.com.au



@National Institute of Training RTO 90804



admin@niot.com.au



UNITS OF COMPETENCY



The successful completion of this qualification requires competency to be achieved in 13 units comprising of seven (7) core units and six (6) elective units.

Unit Code	Unit Name
CHCCCS015	Provide individualised support (C)
CHCCCS023	Support independence and well being (C)
CHCCOM005	Communicate and work in health or community services (C)
CHCDIV001	Work with diverse people (C)
CHCLEG001	Work legally and ethically (C)
HLTAAP001	Recognise healthy body systems (C)
HLTWHS002	Follow safe work practices for direct client care (C)
CHCAGE001	Facilitate the empowerment of older people (E)
CHCAGE005	Provide support to people living with dementia (E)
CHCCCS011	Meet personal support needs (E)
CHCCCS025	Support relationships with carers and families (E)
CHCDIS003	Support community participation and social inclusion (E)
HLTINF001	Comply with infection prevention and control policies and procedures (E)

KEY: (C) denotes a core unit and (E) denotes an elective unit.

CAREER OPPORTUNITIES

Upon completion, students could be eligible to apply for roles such as:

- Personal Carer
- Support Worker
- Respite Worker
- Home and Community Care Worker

IMPORTANT INFORMATION

DURATION

This qualification is typically delivered 2 days a week over a duration of 6 months, including 120 hours of work placement in an aged care setting.

DELIVERY

The training is conducted by a qualified, industry current, trainer and assessor to ensure the learning is relevant and up to date. This training will take place in a classroom environment using face-to-face training methods at one of our study locations. Intakes are scheduled throughout the year.

ENTRY REQUIREMENTS

There are no formal entry requirements for this qualification, although applicants will need to undertake an LLN assessment. Students are required to complete Practical Placement which requires a police clearance. Students must also have current COVID-19 and Influenza vaccinations.

FEES & FUNDING



Government funding is available for this course. In order to be eligible for funding, students must meet all selection criteria as outlined by the Western Australian Government. For more information, please visit: <https://niot.com.au/funding-fees/>

Fee Free: \$0.00
Non-Concession: \$907.20

To confirm your eligibility, please contact us.
*The Student tuition fees are indicative only and are subject to change given individual circumstances at enrolment. Additional fees may apply such as student service and resource fees

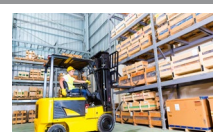
your future starts *here*



EARLY CHILDHOOD EDUCATION & CARE



AGED CARE



SUPPLY CHAIN OPERATIONS

KEEP IN TOUCH

- @NIOT90804
- 08 9452 2266
- @niot_wa
- niot.com.au
- @National Institute of Training RTO 90804
- admin@niot.com.au

MADDINGTON

Head Office
Unit 2/15-17 Blackburn St
Maddington WA 6109

MADDINGTON

Training Room
Unit 4/15-17 Blackburn St
Maddington, WA 6190

KENWICK

Practical Warehouse
24 Austin Ave
Kenwick, WA 6107

MANDURAH

Training Rooms
89 Alnutt St
Mandurah, WA 6210